

## 150W LED Flood Spot Light Car Park Garden Heavy Duty - Direct Replacement for 250W Metal Halide

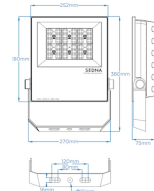
**£83.40**

**18,750lm**

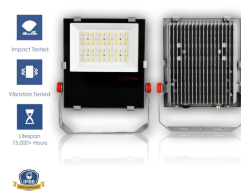


**150W**  
Replaces  
**250W MHL**

### LED Premium Flood Light DIMENSIONS



### DURABLE, ROBUST AND DEPENDABLE LONG LASTING PERFORMANCE



### IDEAL FOR EXTERIOR LIGHTING

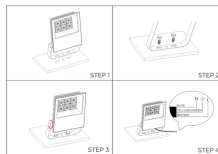
Quality and Advanced Design of Aluminum Housing Help for Better Heat Dissipation and Long-lasting Performance



### 24/7 CUSTOMER SUPPORT



### INSTALLATION INSTRUCTIONS:



1. Drill holes on the installation surface as per bracket dimension diagram.
2. Position and fix the luminaire using appropriate fixings for the chosen surface.
3. Adjust luminaire to suitable angle, tighten screw and secure the luminaire.
4. Connect power cable correctly as per wiring diagram and make waterproof measures well to maintain the same IP rating of the luminaire.



### PRODUCT INFORMATION

LED Type	Lumileds Luxeon® SMD 3030 LEDs
Warranty	5 Year
Part L Compliant	Yes
Dimensions	380mm x 252mm x 75mm
Weight	5.5kg
Windage	0.14m <sup>2</sup>
Equivalent to	250W Metal Halide

### TECHNICAL SPECIFICATIONS

Power Consumption	150W
Input Voltage	90-305V AC
Power Factor	>0.95
Operating Temperature	-20°C to 50°C
L70 Rated Lifetime	+75,000hrs
Ingress Protection	IP66 / IK09

### LUMEN PERFORMANCE

Luminous Efficiency	125lm/W
Beam Angle	60°
CRI (Colour Rendering Index)	>80Ra
Lumen Output	18,750lm

### AVAILABLE OPTIONS

Colour Temperature	Natural White (4000-4500K)
--------------------	----------------------------

## PRODUCT INFORMATION

## TECHNICAL SPECIFICATIONS

## LUMEN PERFORMANCE

### AVAILABLE OPTIONS

3-Hour Emergency Version	No
Built-in Microwave Occupancy Detector	No
1-10V Dimmable	No
DALI Dimmable	No
DMX 512 Compatible	No

### 150W LED Flood Spot Light Car Park Garden Heavy Duty - Direct Replacement for 250W Metal Halide

Now with 5-year Warranty! An integrated unit using specifically designed using Lumileds Luxeon® SMD 3030 LEDs for long-term efficiency & performance up to 125lm/W. Whats-more, minimised attraction to nocturnal wildlife due to non-ultraviolet light, high light output even in cold temperatures and a wide range of sizes and options to suit round the clock environments, making it the industries number one choice! Available in four different wattage options of 50W, 100W, 150W and 200W delivering superior lumen outputs of between 6,250lm - 25,000lm. Features rear adjustable bracket suitable for post or wall mounting & toughened glass cover. Fully impact and vibration tested with a durable L70 rated lifespan of +75,000 hours. Further benefits include a breathable valve which voids internal fogging and frosting as well as an advanced multi-fin heat sink design ensuring heat dissipation and longevity for the LEDs.

[DOWNLOAD PRODUCT INSTALLATION MANUAL / GUIDE](#)