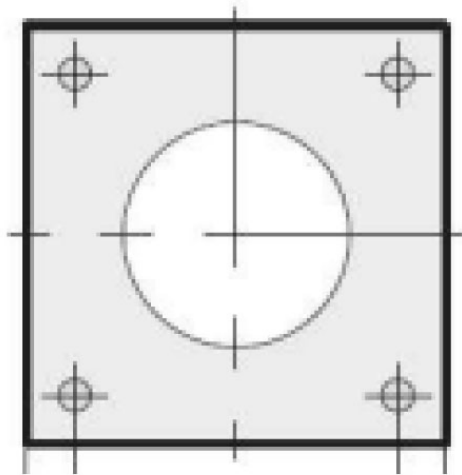


**330mm Flange Plate Foundation Template (300mm hole centres) for M24 Hole
- 168mm Base Lighting Column**

£40.04



330mm flange plate template for fitting flange plated lighting columns - requires 4 x M24 J-bolt set - item not included sold separately. **PLEASE NOTE - Weight & Windage must be checked for suitability of the column against the installation postcode. Please email us for more information prior to purchase. It is the responsibility of the installer to ensure columns are installed safely and correctly, no liability will be accepted by The LED Store/supplier. In certain cases a ground survey may be required prior to installation. .**