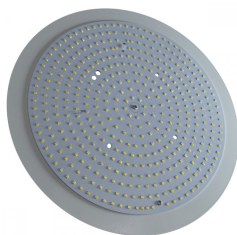
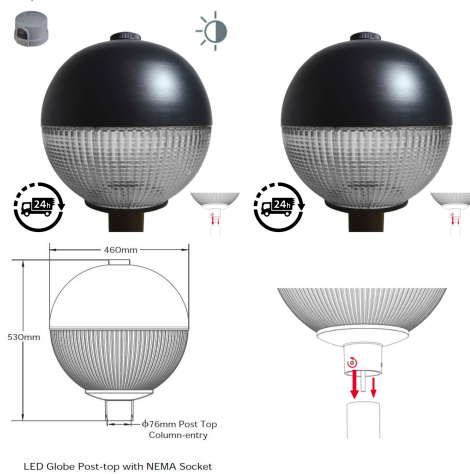


LED Globe Post Top Lantern 40W c/w Photocell NEMA Dusk til Dawn Sensor

£267.86

4,400lm

40W
76mm
Column
Entry



DARK SKY FRIENDLY



3000K*



PRODUCT INFORMATION

| | |
|------------------|--------------------|
| LED Type | SMD3030 LEDs LM80 |
| Warranty | 5 Year |
| Part L Compliant | Yes |
| Dimensions | Ø460mm x 530mm |
| Weight | 6.9kg |
| Windage | 0.16m ² |
| Equivalent to | 70 SON / MHL |

TECHNICAL SPECIFICATIONS

| | |
|-----------------------|---------------|
| Power Consumption | 40W |
| Input Voltage | 100-280V AC |
| Power Factor | >0.95 |
| Operating Temperature | -20°C to 65°C |
| L70 Rated Lifetime | +55,000hrs |
| Ingress Protection | IP65 |

LUMEN PERFORMANCE

| | |
|------------------------------|-------------------------------|
| Luminous Efficiency | 120lm/W |
| Beam Angle | 150° x 150° (All Round Optic) |
| CRI (Colour Rendering Index) | >80Ra |
| Lumen Output | 4,800lm |

AVAILABLE OPTIONS

| | |
|--------------------------|--|
| Colour Temperature | 3000K (Dark Sky Friendly- 0% ULOR) 4000K |
| 3-Hour Emergency Version | No |

PRODUCT INFORMATION

TECHNICAL SPECIFICATIONS

LUMEN PERFORMANCE

AVAILABLE OPTIONS

Built-in Microwave Occupancy Detector No

1-10V Dimmable Available on Request

DALI Dimmable Available on Request

****Fitting Comes inclusive with integral 3-Pin NEMA Socket and Lucy Zodion 70lux Photocell****

The LED Globe series post-top street light is a modern designed LED luminaire for column/post mounting at heights of 3 - 8m, suited to general open areas such as pedestrian areas, car parks and low-to-medium traffic urban applications.

The unit features an IP65/IK08 RAL Black die-cast housing finished with a prismatic diffuser giving all round uniform illumination with minimal light spillage. The luminaire is capable of reaching 20-30lux from typical 5-6m installations. Furthermore, the light provides easy access to LED and Driver via a removable head and is compatible with standard external mains photocells for complete dusk-till-dawn control.

The unit is complete with base mount suitable for 76mm post top column-entry hence universally compatible. Additional benefits include 110lm/W efficacy, +55,000 hour maintenance free performance and minimal disturbance to nocturnal wildlife to the lack of UV/IR spectrum associated with LED photo-metric characteristics.

[DOWNLOAD PRODUCT INSTALLATION MANUAL / GUIDE](#)