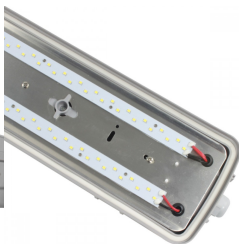


****CLEARANCE STOCK** 4ft LED Strip Lights Non-corrosive IP65 Twin/1200mm [1.2m]Vapour-proof - 3hr Emergency Version**

£93.72



PRODUCT INFORMATION

LED Type	SMD2835 LEDs
Warranty	5 Year
Part L Compliant	Yes
Dimensions	1260mm x 120mm x 85mm
Weight	2.7kg
Equivalent to	1200mm Twin 36W T8

TECHNICAL SPECIFICATIONS

Power Consumption	40W
Input Voltage	110-280V AC
Power Factor	>0.95
Operating Temperature	-20°C to 50°C
L70 Rated Lifetime	+40,000hrs
Ingress Protection	IP65
Emergency Battery Type	YUASA® 12V 1300mAh NiCd

LUMEN PERFORMANCE

Luminous Efficiency	120lm/W
Beam Angle	120°
CRI (Colour Rendering Index)	>75
Lumen Output	4800lm

AVAILABLE OPTIONS

Colour Temperature	Cool White (6500-7000K)
--------------------	-------------------------

PRODUCT INFORMATION

TECHNICAL SPECIFICATIONS

LUMEN PERFORMANCE

AVAILABLE OPTIONS

3-Hour Emergency Version Yes

DMX 512 Compatible No

4ft / 1200mm [1.2m] Twin LED Strip Light - 3hr Emergency Version

A revolutionary LED replacement to replace complete non-corrosive fluorescent tube fittings in 4ft / 1200mm twin - 40W / 4,000lm variety. Utilising Epistar SMD2835 with direct illumination technology, prove advantageous over both conventional fluorescents and LED tube counterparts in terms of industry leading efficacy: 100lm/W. Hence an L70 rated lifetime of 30,000+ hour and simple installation, this unit has proved to be the specifiers number one choice being deemed truly 'fit-and-forget'. Wide demand throughout commercial and industrial sectors, namely workshops, high-humidity areas and even outbuildings use being IP65 weather-proof. Toughened polycarbonate diffuser for uniform lumen output with robust PC base. Unit comes complete with stainless steel side clips, detachable hinged tray for ease of install, fixing brackets and M20 x 1.5 IP65 cable gland. Options of 4ft/1200mm and 5ft/1500mm in single & twin variation. M3/NM3 emergency version includes internal built in 3-hour maintained emergency pack.