

## **The LED Store Horse Arena 40m x 20m Sample Area - 100lux**

CAUTION: The performed design & lux level calculation has been carried out using the specified luminaires & layouts - any deviations to product and/or layout will result in variations in the lux levels and overall lighting scheme and could affect compliance.

Date: 20.11.2020  
Operator: The LED Store

Operator The LED Store  
Telephone 03333 444 943  
Fax 03333 444 943  
e-Mail [sales@theledstore.co](mailto:sales@theledstore.co)

## Table of contents

<b>The LED Store Horse Arena 40m x 20m Sample Area - 100lux</b>	
Project Cover	1
Table of contents	2
<b>The LED Store LSTSAL-300 300W LED FLOOD SPORTS AREA LIGHT / EXTERIO...</b>	
Luminaire Data Sheet	3
<b>Horse Arena</b>	
Planning data	4
Luminaire parts list	5
3D Rendering	6
False Colour Rendering	7
<b>Exterior Surfaces</b>	
<b>Calculation Grid</b>	
Value Chart (E, Perpendicular)	8

Operator The LED Store  
Telephone 03333 444 943  
Fax 03333 444 943  
e-Mail [sales@theledstore.co](mailto:sales@theledstore.co)

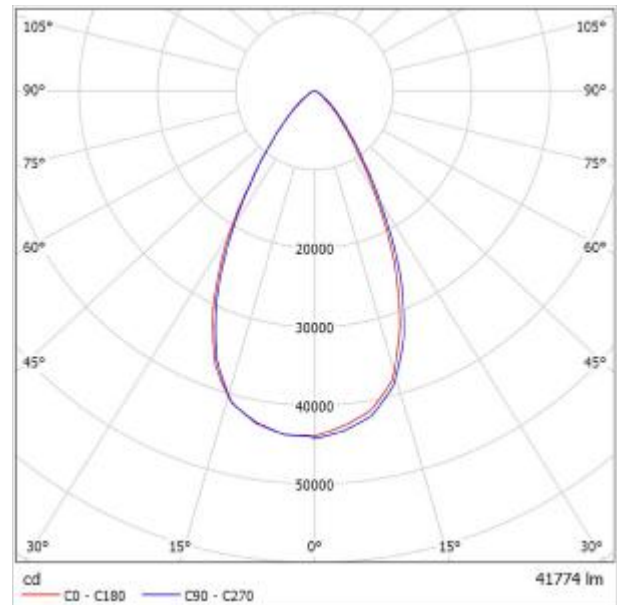
## The LED Store LSTSAL-300 300W LED FLOOD SPORTS AREA LIGHT / EXTERIOR CAR PARK FLOOD LIGHTING 60 Degree Beam Angle / Luminaire Data Sheet

See our luminaire catalog for an image of the luminaire.



Luminaire classification according to CIE: 100  
CIE flux code: 86 97 99 100 100

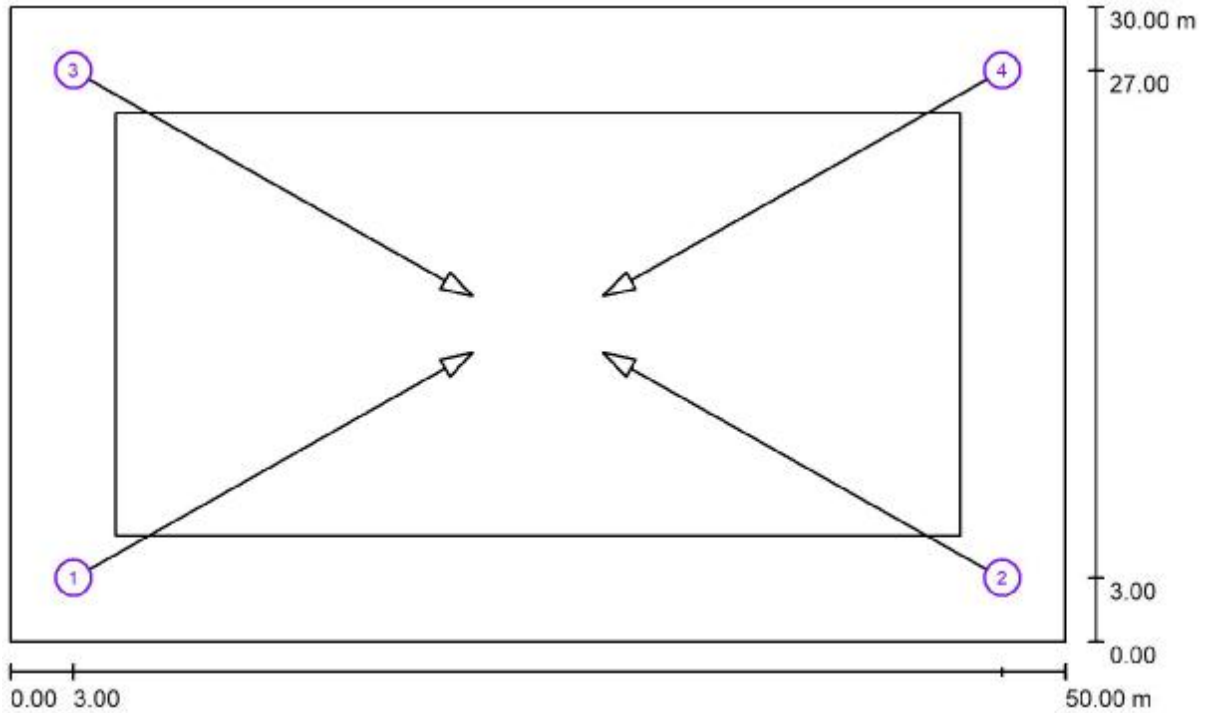
Luminous emittance 1:



Due to missing symmetry properties, no UGR table can be displayed for this luminaire.

Operator The LED Store  
 Telephone 03333 444 943  
 Fax 03333 444 943  
 e-Mail sales@theledstore.co

**Horse Arena / Planning data**



Maintenance factor: 0.80, Mounting Height: 6.000m, ULR (Upward Light Ratio): 26.5%

Scale 1:358

**Luminaire Parts List**

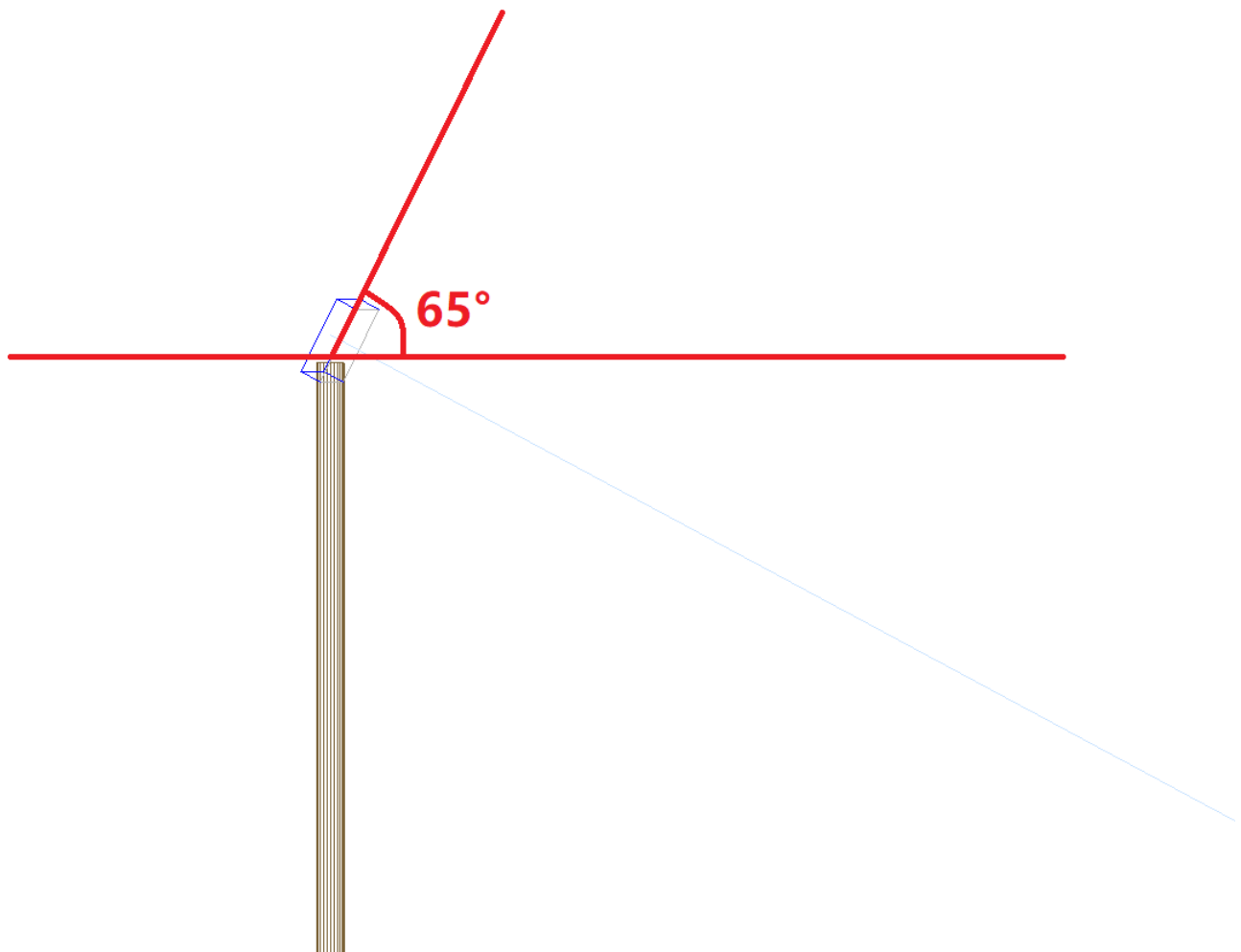
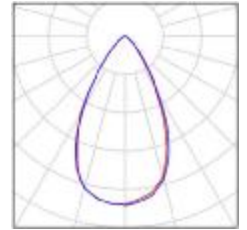
No.	Pieces	Designation (Correction Factor)	Φ (Luminaire) [lm]	Φ (Lamps) [lm]	P [W]
1	4	The LED Store LSTSAL-300 300W LED FLOOD SPORTS AREA LIGHT / EXTERIOR CAR PARK FLOOD LIGHTING 60 Degree Beam Angle (1.000)	41774	41774	300.3
Total:			167097	Total: 167097	1201.2

Operator The LED Store  
Telephone 03333 444 943  
Fax 03333 444 943  
e-Mail [sales@theledstore.co](mailto:sales@theledstore.co)

## Horse Arena / Luminaire parts list

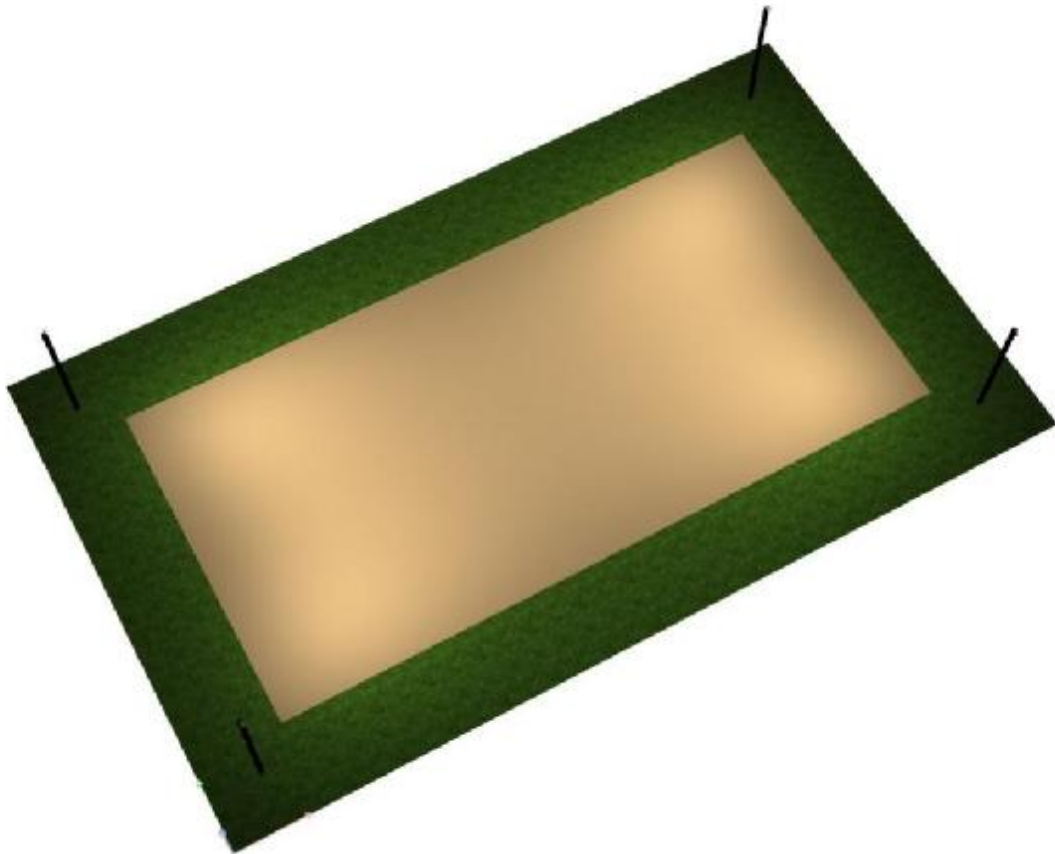
4 Pieces The LED Store LSTSAL-300 300W LED FLOOD  
SPORTS AREA LIGHT / EXTERIOR CAR PARK  
FLOOD LIGHTING 60 Degree Beam Angle  
Article No.: LSTSAL-300  
Luminous flux (Luminaire): 41774 lm  
Luminous flux (Lamps): 41774 lm  
Luminaire Wattage: 300.3 W  
Luminaire classification according to CIE: 100  
CIE flux code: 86 97 99 100 100  
Fitting: 1 x LSTSAL-300 (Correction Factor  
1.000).

See our luminaire  
catalog for an image of  
the luminaire.



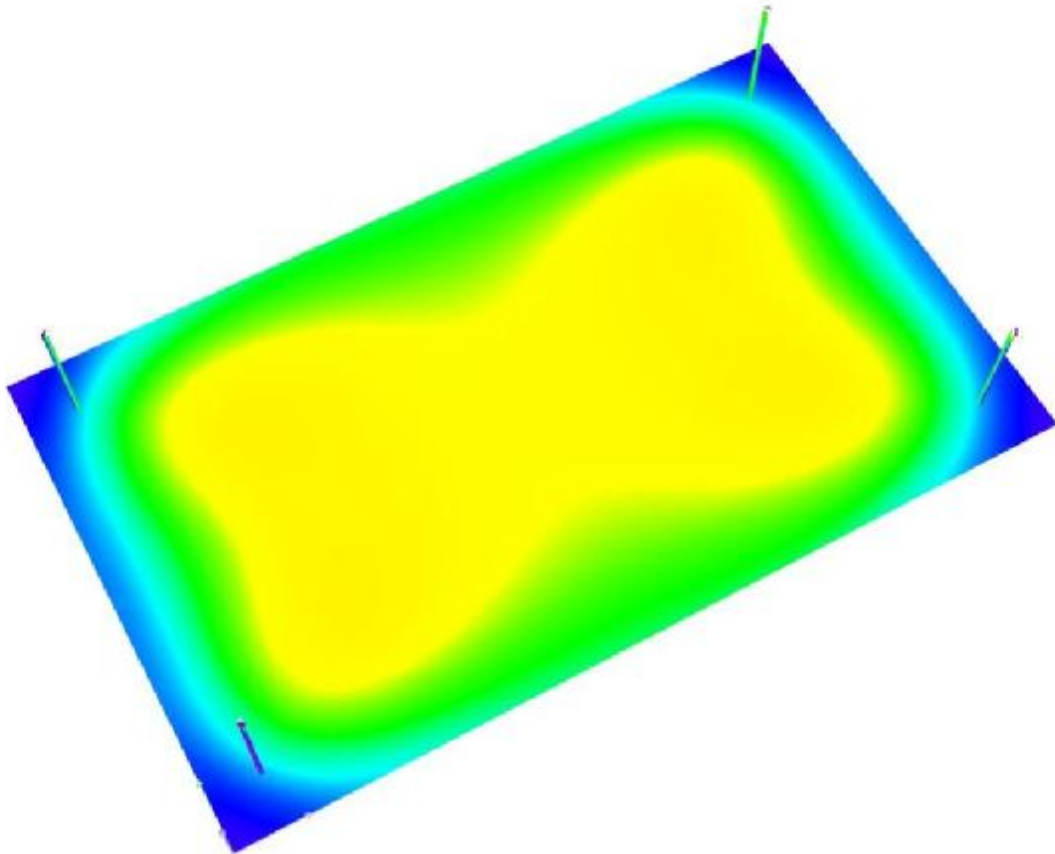
Operator The LED Store  
Telephone 03333 444 943  
Fax 03333 444 943  
e-Mail [sales@theledstore.co](mailto:sales@theledstore.co)

## Horse Arena / 3D Rendering



Operator The LED Store  
Telephone 03333 444 943  
Fax 03333 444 943  
e-Mail [sales@theledstore.co](mailto:sales@theledstore.co)

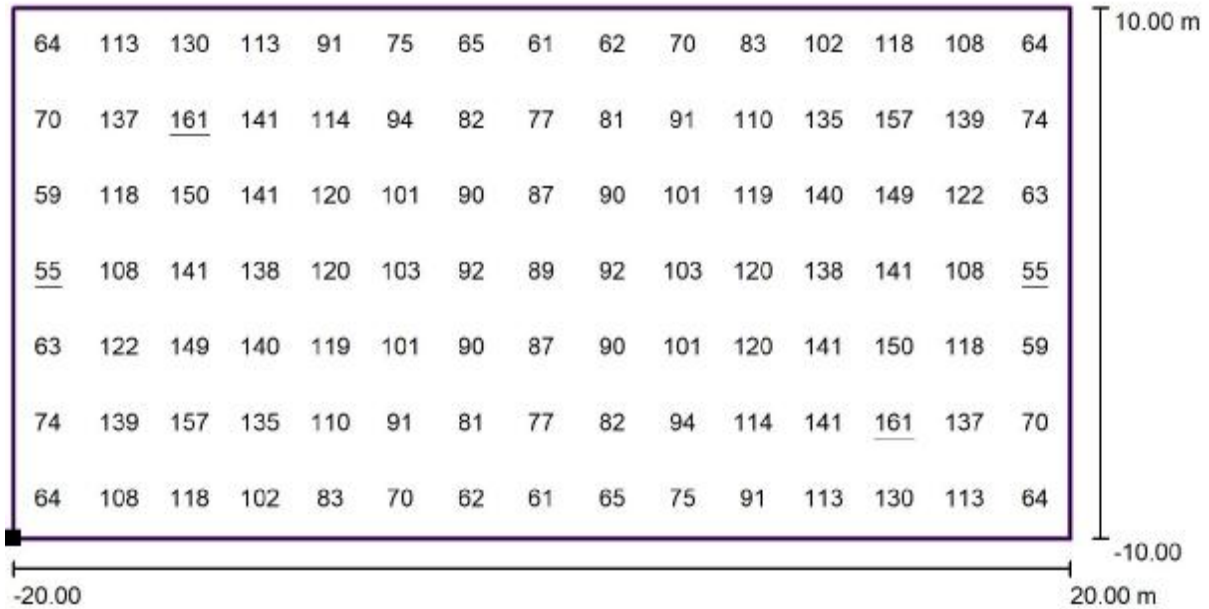
## Horse Arena / False Colour Rendering



0 1 5 25 50 100 200 300 400 lx

Operator The LED Store  
 Telephone 03333 444 943  
 Fax 03333 444 943  
 e-Mail sales@theledstore.co

### Horse Arena / Calculation Grid / Value Chart (E, Perpendicular)



Values in Lux, Scale 1 : 286

Position of surface in external scene:  
 Marked point: (5.000 m, 5.000 m, 0.000 m)



Grid: 15 x 7 Points

$E_{av}$ [lx]	$E_{min}$ [lx]	$E_{max}$ [lx]	u0	$E_{min} / E_{max}$
103	55	161	0.53	0.34